

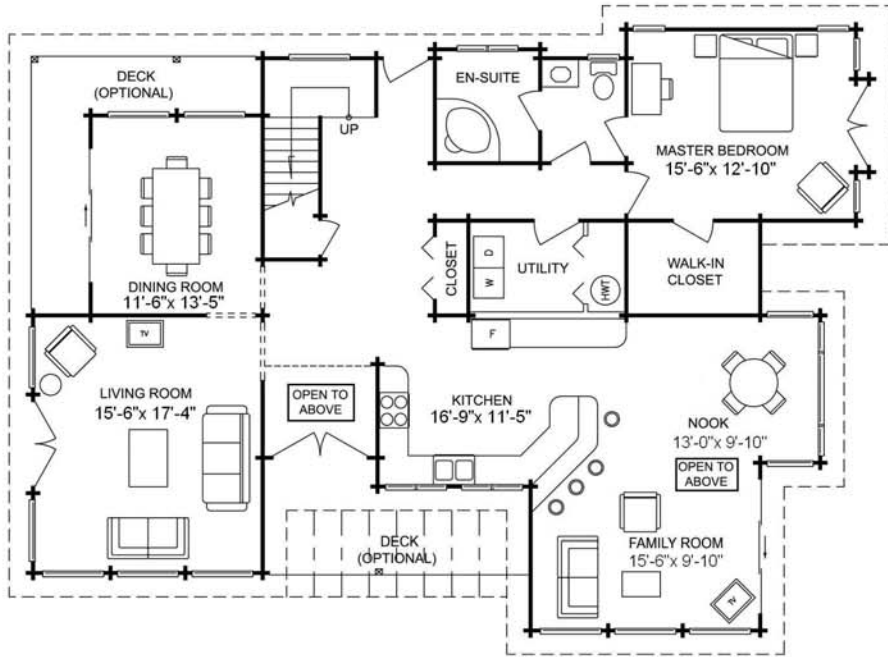
2329 sq.ft. / 216.33 sq.m.
Call 1 800 665 0660 or visit us at www.panabode.com



An elegant, distinctive home framed by vast areas of glass and expansive decks. It's the ideal choice for a view or garden setting. Critical accommodation is confined to the main floor with a spacious family room, kitchen combination under vaulted open beam ceilings. The en-suite master bedroom features a walk-in closet, French exterior doors and easy access to laundry facilities. All this plus formal living and dining areas again under vaulted ceilings plus two bedrooms up, expansive decks and a grand entrance way.

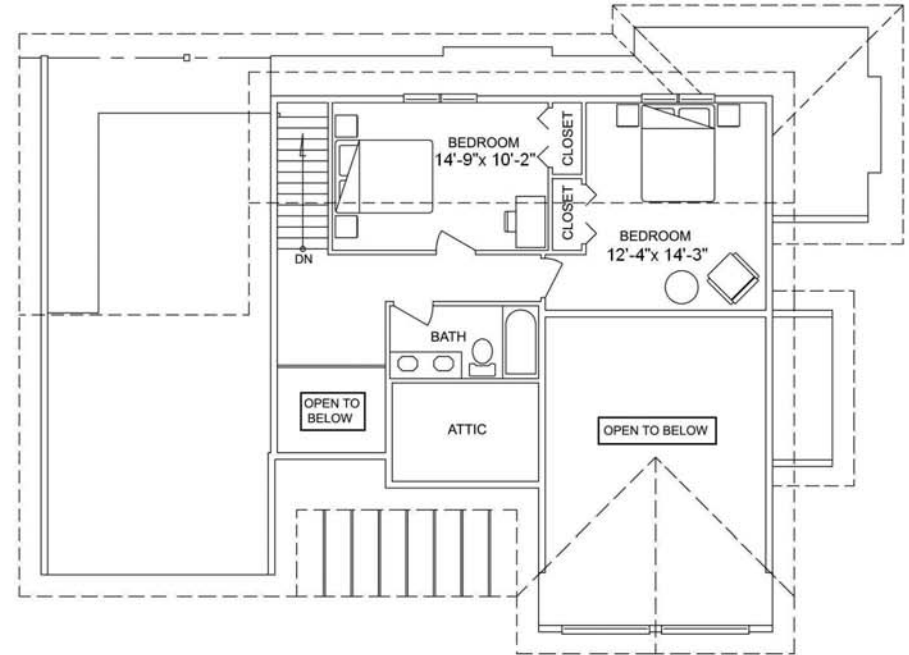
Vermont

pan-abode[®]
THE ORIGINAL



MAIN FLOOR PLAN

1771 sq. ft. (164.51 sq. m.)



UPPER FLOOR PLAN

558 sq. ft. (51.82 sq. m.)

TOTAL AREA

2329 sq. ft. (216.33 sq. m.)

WIDTH - 57'-8" (17.57 m.)
DEPTH - 41'-6" (12.65 m.)

